



Kingsbridge Metal

208 Industrial Court
Carrollton, Georgia 30117

(770) 830-0711

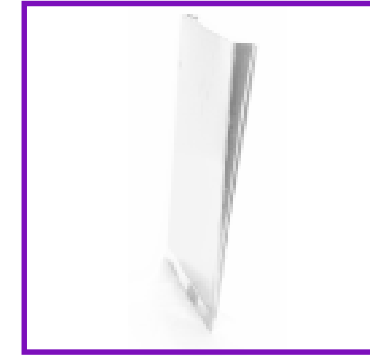
P. O. Box 2027
Carrollton, Georgia 30112

Fax: (770) 830-1212
contactus@kingsbridgemetal.com

Table of Contents

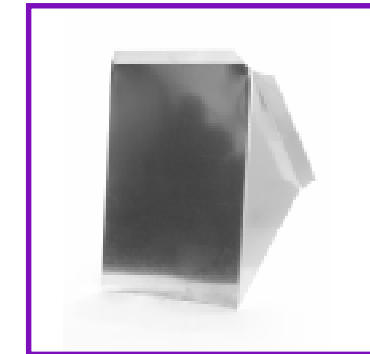
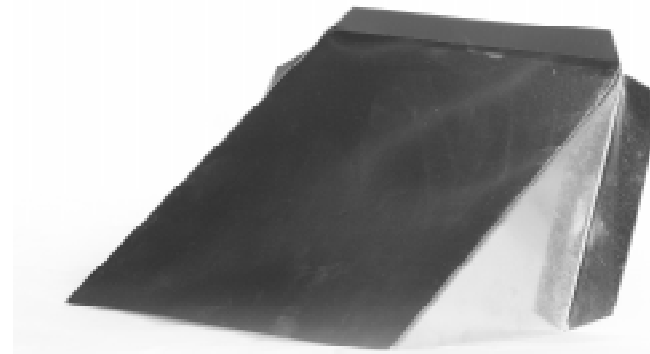
100 Series	Page
101-Pipe	2
111-90-Degree Adjustable Elbow	3
121-45-Degree Adjustable Angle	3
200 Series	
222-Standard Stackhead-7" Throat.	4
222s-Short Stackhead-2 1/2" Throat	4
223-Long Stackhead-12" Throat.	4
231-Straight Stack Boot.	5
233-90-Degree Boot	5
234-Center End Stack Boot.	5
236-Straight Adjustable Stack Boot	5
237-Po-Boy Boot.	6
241-Straight Register Boot	6
241F-Straight Ceiling Boot with Flange	7
243-90-Degree Register Boot.	6
243F-90-Degree Ceiling Boot with Flange	7
244-Center End Register Boot	6
244F-Center End Ceiling Boot with Flange	7
261-Starting Collar.	9
261F-Duct Board Starting Collar.	9
265-Tapered Reducer.	8
271-Tee.	8
272-Bull Head Wye.	8
273-End Cap.	10
275-Damper with Handle and Bearing	10
276-45-Degree Stud Wye	8
300 Series	
300-Flex Saddle.	10
300-Wall Cap with Damper & Bird Screen	10
301-Plenums.	11
302-Drain Pan.	11
302CP-Condensate Pump Drain Pan with Bracket	11
310- Starting Collar with Damper	9
310F-Duct Board Starting Collar with Damper.	9
311-In-line Damper	12
333-Vent Cap	13
335-Tall Cone Flashing	13
336P-Pitch Pan	12
336-Roof Flashing.	13
337-Combo Flashing	13
338-Storm Collar	13
353-Ceiling Box	14

Information Holder



Side View

Line Set Cover



Open View

Recessed Dryer Box



Side View

RAT
 Round airtight stick-ons
 for round pipe



RATD
 Round airtight stick-ons
 for round pipe with damper

RATDS
 Round airtight stick-ons
 for round pipe
 with scoop & damper



Table of Contents

	Page
400 Series	
401-Wall Stack	14
401-Rectangular Duct	14
406-Hammer Lock Starting Collar	15
411-Rectangular End Cap	14
417-Rectangular Duct Reducer	15
420-Rectangular Duct Transition	15
421-Rectangular to Round Transition	15
430-Rectangular Long Way 90-Degree Elbow	16
435-Rectangular Long Way 45-Degree Elbow	16
440-Rectangular Short Way 90-Degree Elbow	16
445-Rectangular Short Way 45-Degree Elbow	16
600 Series	
603-Twist Lock with Scoop and Damper for Duct Board	17
700 Series	
703-Spin-In with Scoop and Damper for Metal	17
704-Flat Stick-On	17
706-Flat Stick-On with Damper	17
708-Flat Stick-On with Scoop and Damper	17
1000 Series	
1001-S-Lock	19
1002-Drive Cleat	18
1006-Standing S-Lock	19
Other	
Beauty Shields	12
Boot Rail 26-Inch	7
Filter Channel, 1-Inch X 1-Inch X 1-Inch	18
Filter Racks	11
Flat Sheets	18
Information Holder	21
Line Set Cover	21
Plaster Frames	12
RAT	20
RATD	20
RATDS	20
Recessed Dryer Box	21



101 - Pipe

Our 101 pipe comes in 3 lengths:
3' - 5' - 10'

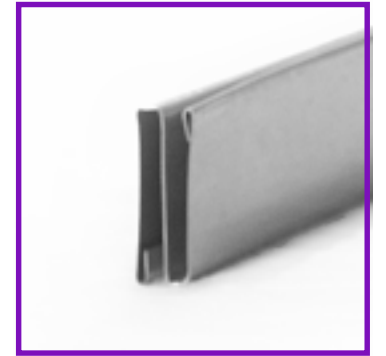
We manufacture diameters between
3" and 24"

10' - 5' - 3'

All pipe comes standard
with a Reeves Modified Lock

We can ship your pipe in racks or
loose based on your request.

1001 - S-Lock

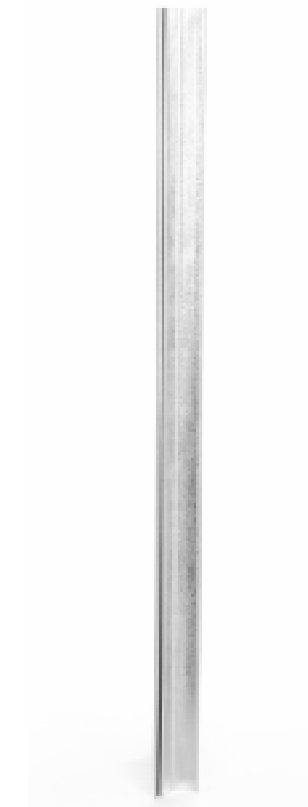


End View

1006 - Standing S-Lock



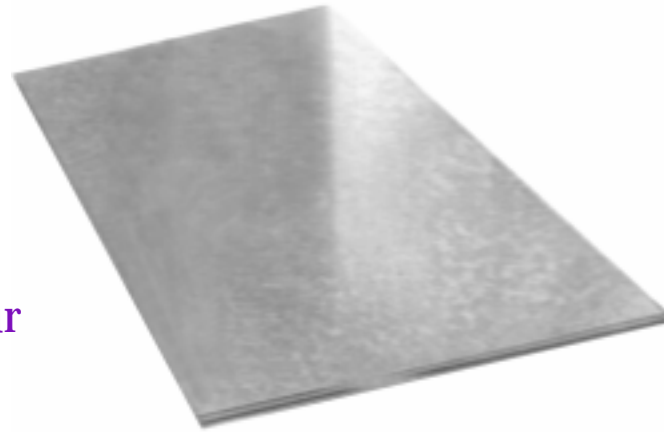
End View



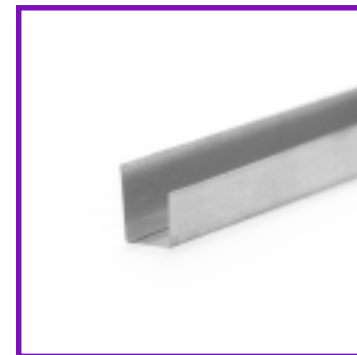
Flat Sheets

28 guage
26 guage
24 guage

We will cut metal to your specifications and deliver it carefully stacked to ensure quality.

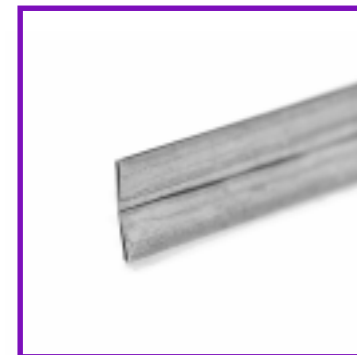


1" X 1" X 1" Filter Channel



End View

1002 - Drive Cleat



End View

111 - 90-Degree Adjustable Elbow

Elbow sizes 3" to 24"



121 - 45-Degree Adjustable Angle

Angle sizes 3" to 24"



223 - 222 - 222s
Stackheads



223 -Long Stackhead
12" Throat

222 -Standard Stackhead
7" Throat

222s -Short Stackhead
2 " Throat

603 - Twist Lock with
Scoop & Damper for
Duct Board



703 - Spin-In with
Scoop & Damper for
Metal

704 - Flat Stick-On

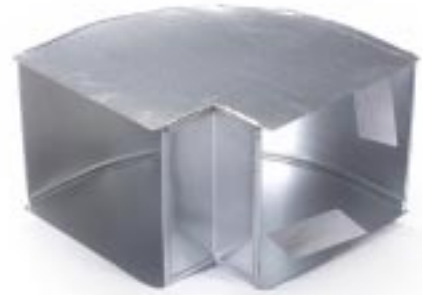


706 - Flat Stick-On with Damper

708 - Flat Stick-On
with Scoop & Damper

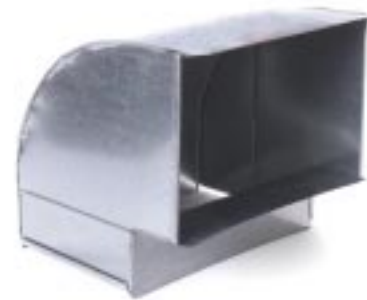


430 - Rectangular
Long Way
90-Degree Elbow



435 - Rectangular
Long Way
45-Degree Elbow

440 - Rectangular
Short Way
90-Degree Elbow



445 - Rectangular
Short Way
45 Degree Elbow

236 - Straight Adjustable
Stack Boot



234 - Center End
Stack Boot

233 - 90-Degree
Stack Boot



231 - Straight
Stack Boot

241 - Straight Register Boot



406 - Hammer Lock Starting Collar



243 - 90-Degree Register Boot

417 - Rectangular Duct Reducer



244 - Center End Register Boot



420 - Rectangular Duct Transition



237 -Po-Boy Boot

421 - Rectangular To Round Transition



401 - Wall Stack

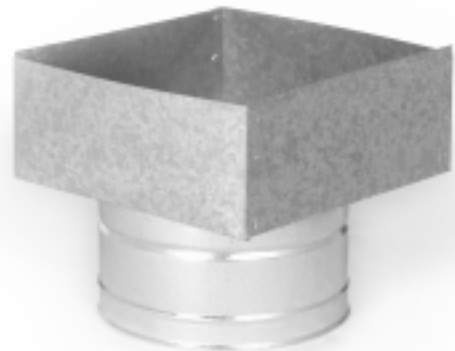
Sizes: 3 1/4" X 10"
3 1/4" X 12"
3 1/4" X 14"



401 -Rectangular Duct

Custom made to your specifications in 3', 4', and 5' lengths

411 - Rectangular End Cap



353 - Ceiling Box



241F - Straight Ceiling Boot with Flange

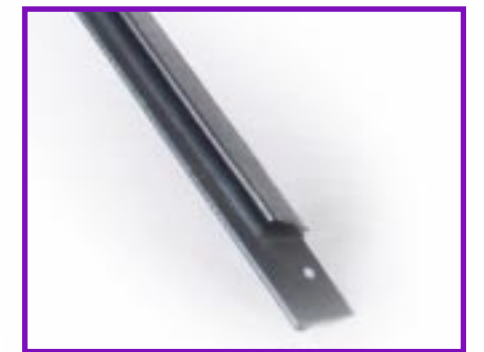
243F -90-Degree Ceiling Boot with Flange



244F - Center End Ceiling Boot with Flange



26" Boot Rail





265 - Tapered Reducer

271 - Tee

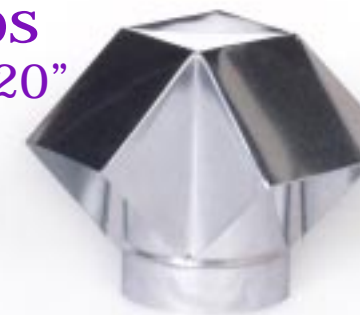


272 - Bull Head Wye

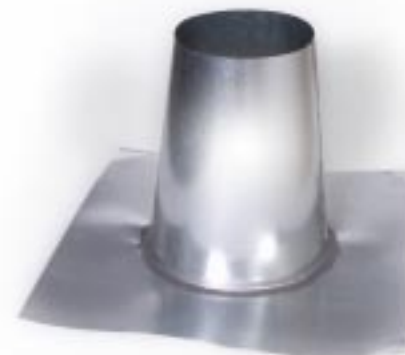
276 - 45-Degree Stud Wye



333 - Vent Caps
Sizes 3" to 20"

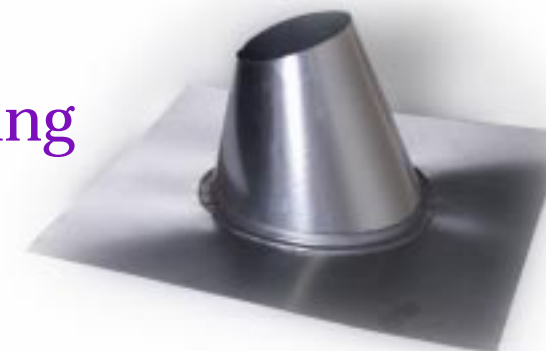


335 - Tall Cone Flashing
Sizes 3" to 20"



336 - Roof Flashing

Pitch: 5/12
9/12
12/12



337 - Combo Flashing

Pitch: 5/12
9/12
12/12



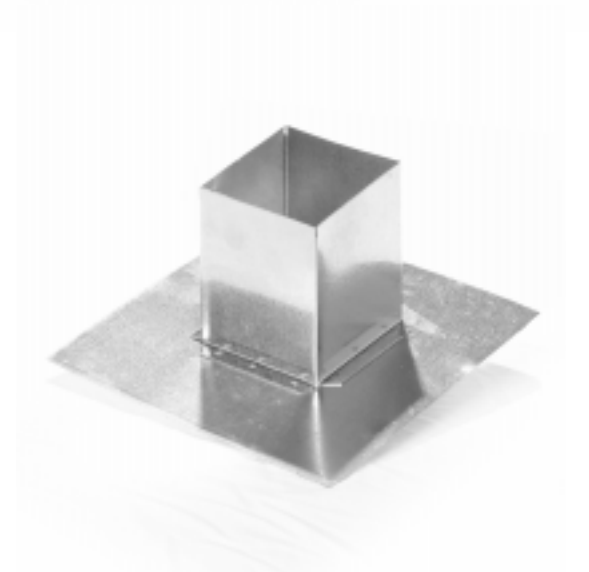
338 - Storm Collar
Sizes 3" to 20"



311 - In-Line Damper



336P - Pitch Pan
Sizes 4" X 4" and 6" X 6"

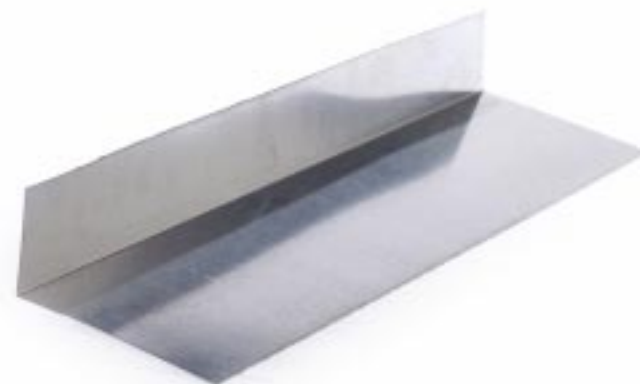


Plaster Frames

Sizes: 24" long
26" long



Beauty Shields
4 1/2" X 16"



261 - Starting Collar



261F - Duct Board Starting Collar



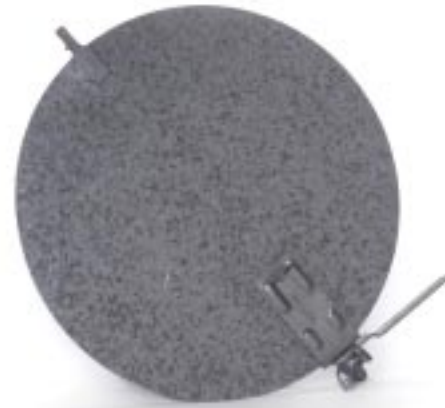
310 - Starting Collar with Damper



310F - Duct Board Starting Collar with Damper



273 - End Cap



275 - Damper with Handle and Bearing

300FS - Flex Saddle



300 - Wall Cap with Damper & Bird Screen



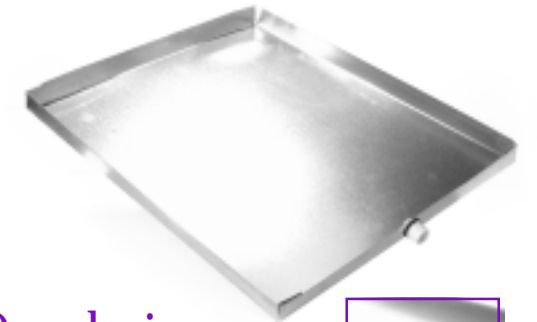
301 - Plenums



Custom made to your specifications.
Shipped broken down for convenience.

302 - Drain Pans

Come standard with a 3/4" drain. Our drain pans are seamless to ensure no leakage.



302CP - Condensate Pump Drain Pan with Bracket



Filter Racks

Made to your specifications



